



World
Interior Design

Aimee Wu Anna Qu

Spectacular Hotels

Phoenix

Theater Hotel

14



Design Company: Atelier Nini Andrade Silva

Project Location: Porto, Portugal

Area: 5,047 m²

Photographer Name: Nickolas Bayntun

As the name suggests, the Theater Hotel was developed around a concept directly related to its previous function, the legendary Teatro Baquet. The interior architecture and design project integrates all its history and respect for the space's soul, what comes to life is an elegant and subtle environment. The doors open, the

curtain rises, and the show initiates a story that is told from the Hotel's within in to the heart of the city!

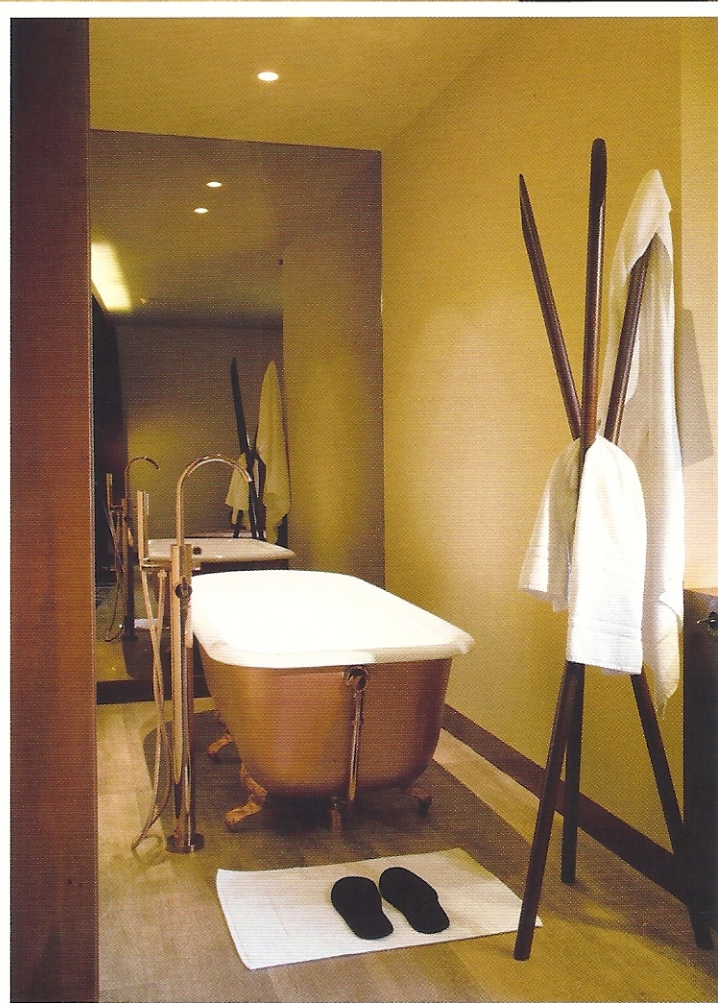
The interior design's concept was developed entirely based on the world of the arts and entertainment, it is felt in every room, area or detail of the Theater Hotel, where its lighting is a

key element of the whole project, based on the notion of involving minimum visibility of the sources. Nini Andrade Silva had implemented this concept for an ever higher goal to let the light give maximum rendering to the textures and colors, having minimum intrusion to the architectural interiors.









The Vine Hotel

15



Design Company: Atelier Nini Andrade Silva

Project Location: Funchal, Portugal

Photographer Name: Henrique Seruca, Alma Mollemans

The Vine Hotel is a brand new 5 star luxury hotel, located in the city centre of Funchal, on the historical area with restaurants and shopping in a walking distance. With architecture of Ricardo Bofill and decoration of Nini Andrade Silva, it is a modern building with a lot of attention to Design. In the lobby, the restaurant Terra Lounge represents the vineyards; a garden with sofas like big baskets and purple cushions the colour of wine. The floor finishing is covered in small round

pebbles, representing the beaches on Madeira with each one designed in a different colour to signify the four seasons.

The color selection, made by green, grey, purple and brown, predominating at the rooms and public spaces, represents the different shadings of a grape-vine across the four seasons. We shuffled the seasons around; having winter after summer, as there is no winter in Madeira, but a summer rain.

The rooms reflect the hotel's language of sophistication to the full. Here, the dialogue flows through the spaciousness, with no separation between sleeping and bathing areas. As if levitating, the beds receive light from the ground. Vine and grape imagery decorates ceiling above the beds which, as if levitating, receive light from the ground.







