
HOTELS TO CELEBRATE LIFE

2013-2014 selection



STYLE



44

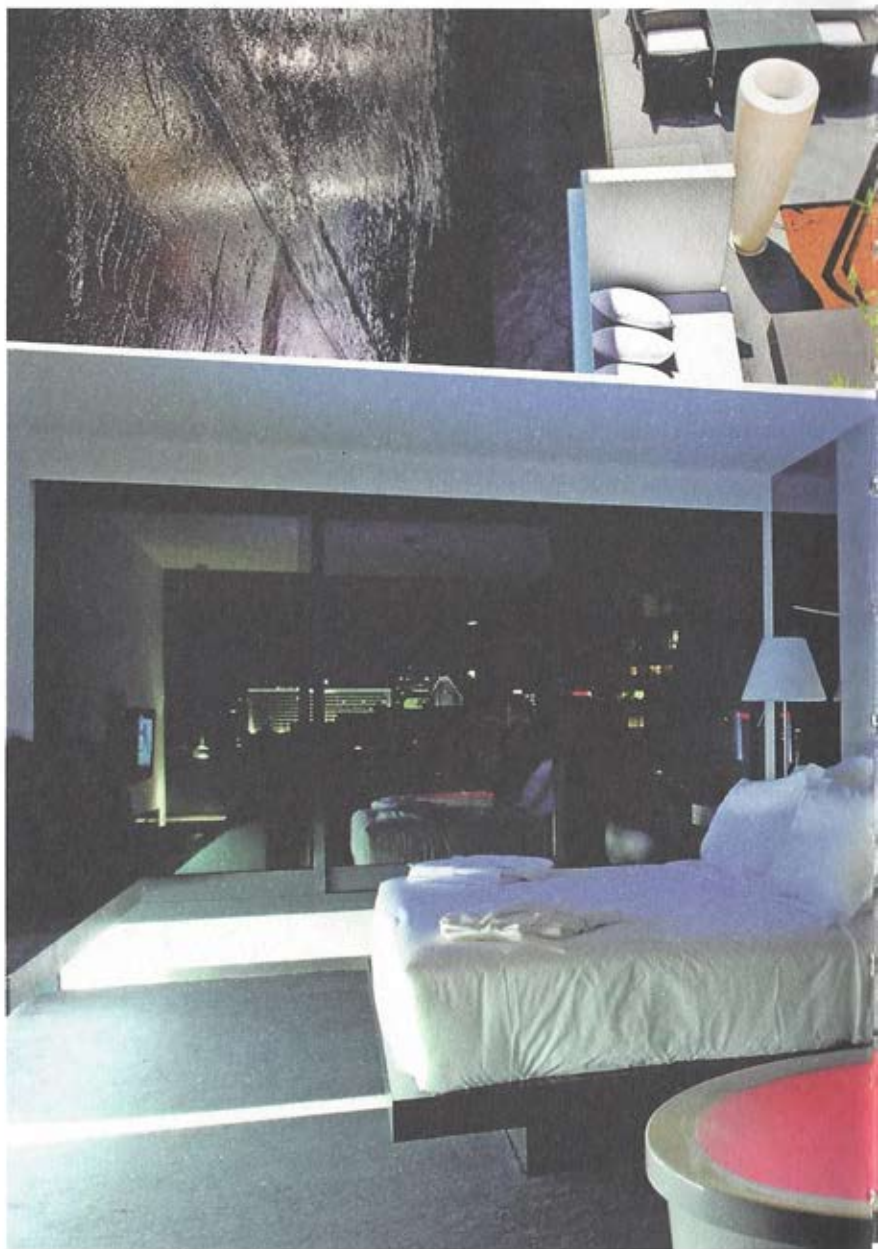
FONTANA PARK.

A new design oasis

The hotel is located close to the historical centre, close to the commercial areas, and just a few minutes from the beaches and the golf-courses. Minimalist, comfortable and attentive to each and every detail, this hotel openly assumes itself as a Zen shelter in the centre of the city.

El establecimiento junto al núcleo histórico y las principales zonas comerciales de la ciudad, a tan solo unos minutos de la playa y campos de golf. Minimalista, acogedor y atento a cada detalle, el hotel constituye un auténtico refugio zen en el centro de la capital Portuguesa.

Rua Eng. Vieira da Silva, 2.
1050-105, **Lisbon**, PORTUGAL.



LISBON | PORTUGAL



FACTS:

139 Rooms,
9 Meeting rooms.

MUSTS:

Saldanha Mar
Restaurant,
Bonsai Restaurant ,
Bar & Lounge,
Fontana Bar.

