

室内公共空间

INTERIOR PUBLIC SPACE 2010年2月 第1期



葡萄藤酒店
The Vine Hotel

艺元素办公

Office Of Artistic Elements

让设计走向生活——Buratti + Battiston Architects, Alex Choi
Usher Design Into Life—Buratti + Battiston Architects, Alex Choi

ISBN 978-7-900774-26-2



9 787900 774262 >

总第3期 定价: 68.00元



Nini Andrade Silva

于里斯本视觉艺术设计和市场营销学院 (IADE) 毕业之后, Nini Andrade Silva便搬到了纽约, 并与著名的国际设计师们共事, 增长了关于装饰艺术和家具设计方面的知识。

后来, 她在伦敦、巴黎和南非地区工作, 并攻读绘画专业的硕士学位, 然后去了丹麦, 接受室内装饰专业的学习。

她是里斯本室内设计的创立者和潮流人物, 还是一位室内设计师、酒店业和私人住宅的企业顾问。

后来她创建了Nini Andrade Silva室内设计和建筑工作室, 她的工作团体的成员包括室内建筑师、室内设计师和产品设计师及来自各领域、各国家的人才。她以其获奖的建筑理念, 塑造了一系列让人印象深刻的酒店、住宅、工作和休闲区作品, 提供建筑、室内设计和品牌推广的服务。

Nini的成功被无数权威的国内国际媒体争相报道, 特别是《纽约时代》、《金融时代》和《Harrods》。她在Andrew Martin的年鉴中被誉为“世界顶级的设计师”。

她在全球范围内拓展她的业务, 并与欧洲、美洲、亚洲和非洲设计师合作过。随着工作室酒店设计市场的拓展, 她创立的品牌有了更强的国际性。

CRUSH ON THE MEADOW VINE

醇香的迷恋

The Vine Hotel

葡萄藤酒店

设计师: Nini Andrade Silva

设计单位: Nini Andrade Silva Atelier Design & Interior Architects International

公司网址: www.niniandradesilva.com

项目地址: 葡萄牙马德拉群岛丰沙尔

建筑面积: 1575平方米

摄影师: Alma Mollemans、Henrique Seruca

缘起

任何东西都能赋予人灵感。从接到酒店方的设计要求开始, 我的想象就开始飞翔。

起初我们的项目就冠名为“葡萄藤”, 而客户也希望将设计与马德拉岛的自然元素融合起来。于是, 当我们得知需要装修的建筑有四层楼时, 就立即联想到用四层楼表现四季, 分别体现葡萄在春夏秋冬四季的不同景致。

由此开始, 整个设计围绕此主题展开, 并融合了这个岛屿上的自然、文化和历史元素。选用的颜色也代表了这些元素, 让来宾置身于大自然的美景之中。

我将生活经历与此项目联系起来, 从我的旅游见闻以及随阅历增长的文化修养到一些对常人来说微不足道的细节, 我都注意到了。这些小事可以启发我创造出一个人惊喜和富于大胆创意的美妙设计。我经常将自己置身于打乱顺序的空间中, 这样新的灵感就会突然迸发出来。我





3

甚至24小时都在想着这些事!

如前所说,葡萄酒、葡萄园以及在海滩上偶遇到的特别的鹅卵石,都是酒店设计的灵感来源。

缘于葡萄藤酒店

犹如一瓶醇香优质的葡萄酒,酒店的血液中流淌着它的灵魂。

葡萄藤酒店集繁复与奢华于一身,将些许简单的精髓和些许周到的考虑都融入了设计之中。投其所好,满足您对视觉和感觉的双重要求。

葡萄藤酒店是一座全新的五星级豪华酒店,是设计类酒店中的一员。坐落于丰沙尔的城市中心,离该城历史上繁华的餐厅和购物中心地段仅一步之遥。Ricardo Bofill的建筑加上Nini Andrade Silva的装潢,这座现代建筑将人们的注意力吸引到了令人惊喜的设计上。

57间豪华卧房,22间豪华套间,30~60平方米不等;

全景式游泳池和酒吧;

大型葡萄酒松弛治疗SPA;

可容纳100人的会议室;

全景式美食餐厅。

感受·缘

酒店的创意如同它名字的含义一样。

到达酒店时,巨大的紫色台阶和金属网在欢迎你,宛如夏日瓢泼大雨般的热切。

大厅有一个花园,其间摆放着沙发,如同一个收获果实的大篮子,还有和葡萄酒一样颜色的紫色窗帘。大厅休息室里,粗糙的树枝和葡萄酒红色的客房窗帘都可以让旅行者联想到该地区兴盛的葡萄酒酿造业和丰富的野生植物物种。

Terra 休闲餐厅是葡萄园的象征。

所有的地面都布满了小块的圆形鹅卵石,就像一片围绕小岛的独特鹅卵石海滩。

浴室的设备都是葡萄形的,这里连每个盒子都像一颗葡萄。

四个楼层房间的色彩反映了四季——绿、灰、紫和褐,是各楼层的主色调。

每层楼都传达着四季更替的感受。很快就到了葡萄成熟的季节,意味着你即将品尝到美妙的葡萄饮品。

我们希望每个房间都能体现酒店精心的构思,而卧室和浴室之间无阻隔式贯通的布局方式更是拓宽了空间,显出设计的独具匠心。

葡萄藤和葡萄的饰物布满床上方的天花



4

1. 楼顶的公共泳池与天空最接近,给人水天相连的错觉
2. 泳池的面积可调开阔,于是便有了遮阳篷,不但视野无限,而且享受无限
3. 蓝幽幽的水池倒映着红色的遮阳篷和高大的支柱,在万家灯火的背景映衬下显得恢弘大气
4. 富有个性的蓬蓬椅在露天的空间里书写着时尚流行



板，就像飘浮在空中一样，吸收着地上的光线，熠熠生辉。

配套家具光滑、舒适，其设计特意与皮革、木料、钢和玻璃的材质相搭配。

屋顶平台有一千多平方米的面积，带给客人们前所未有的体验。

在美食餐厅“UVA”（葡萄牙语，意为“葡萄”）中，你可以看到一大片绿色的景象、透光的过道以及震撼人心的酒店全景，繁复、独特的气氛萦绕其中。

在这里，客人们也可以预定一个私人包间。一张很长的木桌子放置其中，一盏豪华灯饰设置其间，上面有1001颗金属制成的葡萄粒。

迷恋·醇香

屋顶的露天温水全景式游泳池，犹如一个红酒池。以鹅卵石为起点，构思出放置在顶楼水池旁的室外摆设的雏形，并且几乎将它铺满了所有酒店的人行道。

顶楼放了一个长方形的黑色极可意浴缸，它的形状暗含了马德拉岛的“levadas”的意思，那是从山顶延伸到整个岛屿的水渠。巨大

的水池是紫色的，旁边聚集了一些桶状摆设，为这里的景色增加了独特的个性和美感。

浸泡在全景游泳池中，做一次SPA治疗，或是去到美食餐厅领略城市的全景。这只是葡萄藤酒店即将为你带来的愉悦中的一小部分。

日光浴区，一套由Nini Andrade Silva女士设计的户外摆设，在鹅卵石的衬托下，更显奢华。

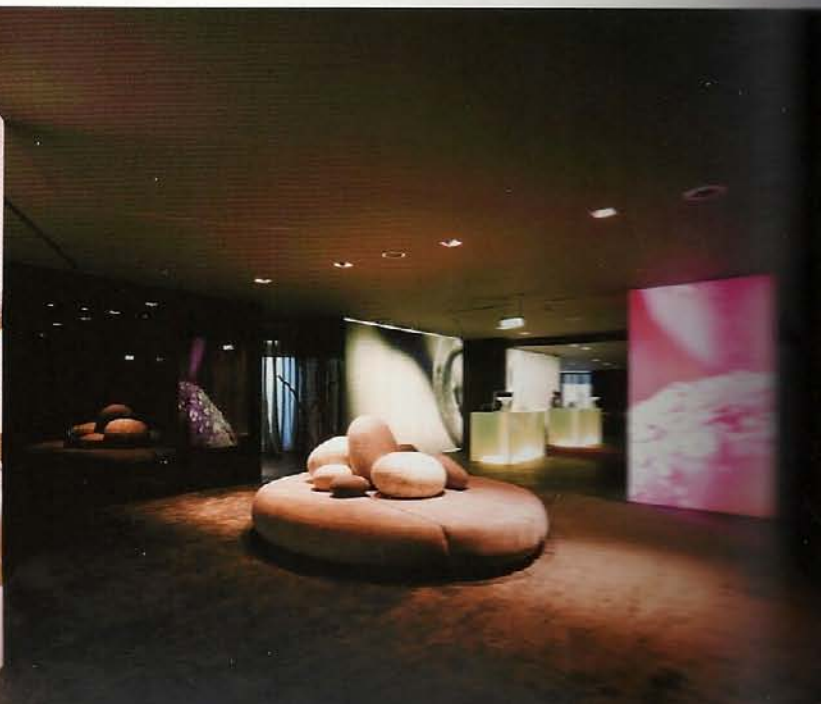
5. 大厅里随意摆着多个沙发座椅，与满地的鹅卵石相映成趣，悠闲自在的意境

6. 圆形的大坐垫上堆放着椭圆的靠枕，与铺地的鹅卵石相映成趣

7. 墙上别开生面的挂画给餐桌当了背景，一吃一画，相得益彰

8. 地毯将楼梯渲染成紫红色，在楼梯两边瀑布般的灯饰映衬下，如梦似幻

9. 葡萄红的地毯与天花上和下应，加上地毯边葡萄藤造型的灯盒，华丽而高贵







缘起

项目开始时,原来室内的柱子结构是一个难点,后来我们把它转化成了一些灯,问题迎刃而解。

照明是此项目的一个基本问题。因为,是它给所有的区域都蒙上一种神秘的色彩,特别是那些抬高的前厅,灯光让人们感到置身于大森林之中。

照明背景板上的色彩也提亮了自然元素的色彩,我们决定把背景板放在客房与套房的天花板上,而不是墙上,这样大部分客人都可以在床上欣赏到这种色彩。

我们想赋予酒店一种灵魂,像醇正的红酒一样的灵魂。将繁复、奢华的风格融入到些许简单、考虑周详、具有地方特色的设计之中是非常重要的。考虑到酒店应该为客人营造一种愉悦心情,使其能尽情体验休闲乐趣,酒店特别设计了一些供客人放松的地方,比如全景泳池、葡萄酒疗区的Spa馆和可以观赏城市全景的美食餐厅。

浴室是一个容易引起人们注意的地方,铺在地上的鹅卵石可以让客人享受到舒服的足

底按摩。同时,鹅卵石地面从前厅一直铺到电梯,给人们带来自然质感的同时,又避免长时间呆在室内产生的沉闷感。

缘续

当一切完成时,就意味着结束,却又是开始。结束一个自己满意的过程,开始下一个有趣的旅程。留下的是结果,令人回味的却是过程,将问题变成乐趣的过程。

当项目完成时,“葡萄藤”也经由春的萌芽、夏的茂盛、秋的收获、冬的贮藏,留下或浓或淡的醇香,回味在心底。又或许,某一天便再次复苏……

10.11. 藤蔓状的吊灯点燃了餐厅的氛围,收拢的布帘、竖立左右的古根枯藤,似在等着客人入席

12. 暗藏在床周围的灯将白色的床品照得几近透明,而头顶却是鲜嫩欲滴的葡萄,进入其中,如入梦一般



Origin

Everything could inspire me. From the moment I receive the briefing from the hotel owner, my imagination starts to fly.

The project started with a name – The Vine. The client also wanted to relate the design with the natural elements of Madeira Island. Then, we realized that the building had four bedroom floors and immediately thought of giving each floor a season, representing the different shadings of the grapes during spring, summer, autumn and winter.

From here, the design concept developed around this theme, involving many natural, cultural and historical elements of the island. The chosen colors represent all these elements and transport guests to the natural environments.

I find reference guides from my life experiences, from my travels, the cultures I've met and studied along the years and sometimes the tiniest details ignored by most people, which are the ones that I give heed to. These tiny things are able to give birth to the most amazing and daring ideas resulting into wonderful projects. Very often I get myself into disarranged spaces and therefore new ideas come out very suddenly. I am 24 hours attentive!

As I told before, the wine, the vineyards and the unique pebbles of our beaches were used to conceive my idea for the hotel.

The Brief of The Vine

A hotel with soul, just like a good wine.

The Vine is sophisticated and luxurious, with a touch of simplicity and discretion, just the way you like it. It meets guests' double needs of vision and feeling.

The Vine Hotel is a brand-new 5-star luxurious hotel, a member of the Design hotels, located in the city centre of Funchal, on the historical area with restaurants and shopping in a walking distance. With architecture of Ricardo Bofill and decoration of Nini Andrade Silva, it is a modern building with a lot of attention to design.

- 57 luxurious bedrooms and 22 luxurious suites from 30 to 90 m²
- Panoramic swimming pool and bar
- Vinotherapy in a large spa for relaxation
- Meeting rooms with space for up to 100 people
- Panoramic gourmet restaurant

Sensation and Reason

The Vine Hotel was created on the concept as the name implies.

Arriving at the hotel, the great purple staircase and metal mesh symbolize the summer rain, offering a warm welcome.

In the Lobby, there's a garden with sofas like big baskets of harvest and the purple cushions, the color of the wine. The gnarled branches in the lobby lounge and the mulled grape guest room draperies are meant to set travelers thinking about the region's rich viniculture and the exuberant wild vegetation.

The Terra Lounge restaurant represents the vineyards.



13



14



15



13. 客房的设计倡导“以人为本”，于是，住进来的人就只记得享受了
 14. 白色的床品配白色的背景墙，素雅宁静，于是天花吊顶上便有了蕴含主题的葡萄藤装饰
 15. 躺在床上便可以看到天花顶上的“葡萄”，空间的主题如影随形
 16. 白色的床品配白色的床头灯，即使在夜晚，也能亮如白昼



All the floor finishing is covered with small round pebbles, representing the unique pebbled beach of the island.

The bathroom facilities are in form of grapes, as if each box was a grape.

Four floors of rooms are color-coded to reflect the four seasons – green, grey, purple and brown, which are the dominating colors.

Each floor gives the sensation of changing seasons and is close to the grapes' ripeness stage which later gives body a great beverage.

We wanted the rooms to reflect the hotel's language of sophistication. In them, the dialogue flows through the spaciousness, with almost no separation between sleeping and bathing areas.

Vine and grape imagery decorates ceilings above the beds which, as if levitating, receive light from the ground.

The furniture is sleek, comfortable and reflects the intentional harmonious combination of materials like leather, wood, steel and glass.

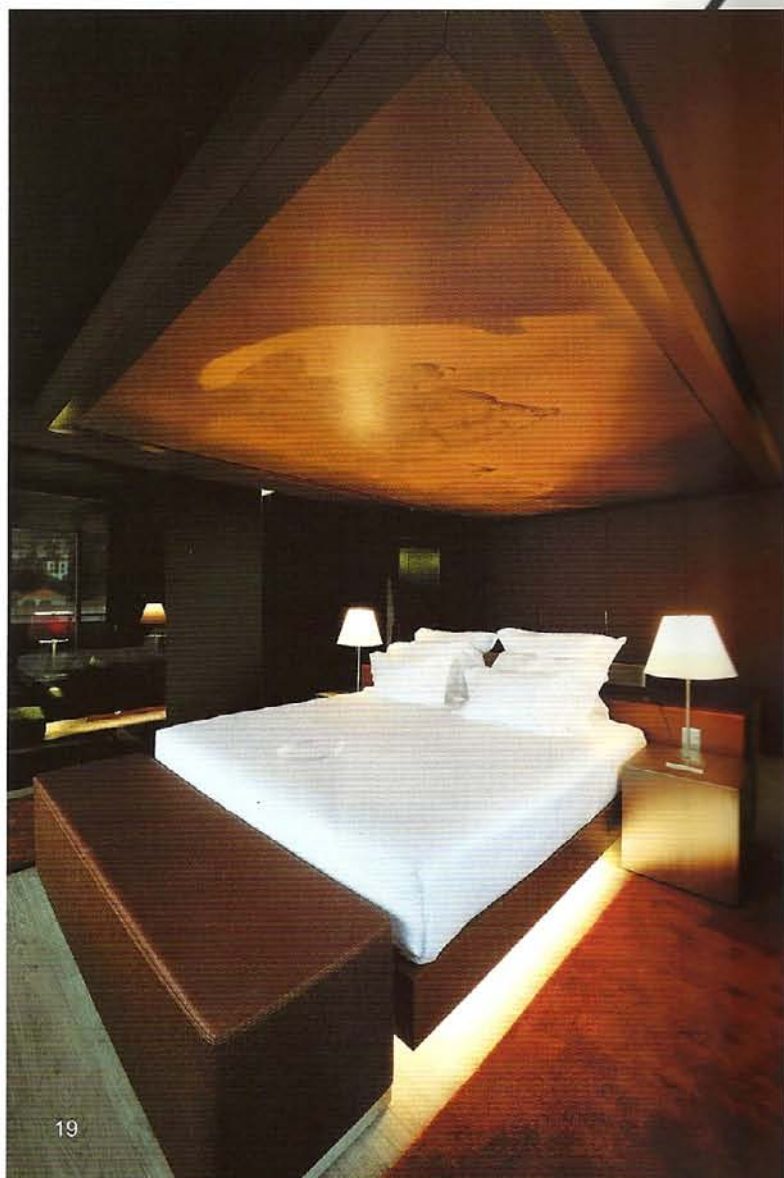
The roof terrace, which is set over 1000m², is a highlight of the guest experience.

At the gourmet restaurant "UVA" (Portuguese for grape), you may find a sophisticated and unique atmosphere set by an enormous green image, a backlit pavement and an amazing panoramic view.

Here, guests may also book a private area where they can delight themselves with a long wood table and an exclusive lamp with the design of 1001 metal grapes.

Crush on the Mellow Vine

The roof-top open-air heated panoramic swimming pool symbolizes a tank of wine. The pebbles were the starting point and they gave shape to the outdoor furniture chosen for the top floor, by the pool and to almost the entire pavement of the hotel.



19

There is a black rectangular Jacuzzi on the top floor whose shape is allusive to the "levadas" from Madeira, the old water-courses from the top hills that used to supply the entire island.

The big pool is purple summoning the barrels and helping to give a unique character and perception to this place.

A dip in the panoramic pool, a vinotherapy session in the spa or a gourmet dinner with a view over the city: these are just a few of the pleasures awaiting you at The Vine.

The pebbles gave shape to an exclusive outdoor furniture collection designed for the sunbathing areas, authorship of Ms Nini Andrade Silva.



20

- 17. 白色的矩形浴缸与床仅有一层玻璃相隔, 这样的设计让空间的情趣大增
- 18. 马赛克贴面的卫浴间让高贵、华丽更升一级
- 19. 白色的床品配深啡色的坐榻, 显得高贵、内敛
- 20. 白色的浴缸放在暗调的空间里, 增添了几分神秘与优雅



Fun

The pillar structure in the interior was a challenge at first and the solution was its transformation into lamps.

The illumination was a fundamental issue of the project because it made it possible to give a mystical feature to all areas, especially to the lift lobbies where guests may have the feeling of being inside a forest.

It also enhances the images of natural elements with its colors through backlit panels, which, in the rooms and suites we decided to put on ceilings instead of the walls because it is what guests mostly observe from the beds.

We wanted to design this hotel with soul, just like a good wine. It was important to mix sophistication and luxury with a touch of simplicity with regional themes and discretion. The hotel has offered an invitation to relaxation creating the better mood to enjoy all the pleasures: a panoramic pool, a 'Vinotherapy' session in the spa and a gourmet dinner with a view over the city.

The bathrooms in particular are objects of

special attention. The pebbles used for the floor offer the guests a wonderful sensation of reflexology. Meanwhile, the continuation of the pebbled floor from the lobbies into the lifts allows a feeling of nature leaving all claustrophobia behind.

To Be Continued

When all these work is finished, it means an end, but also a new beginning, to end a satisfactory process and begin the next interesting journey. What's left is a result, but also an aftertaste for the process, a process turning headache into happiness.

When the project was accomplished, "The Vine" has experienced the sprouting in spring, flourishing in summer, harvesting in autumn and storing in winter. It's kept with a touch of mellowness in our hearts. Maybe, someday it'll be revived again...

21. 客房里还配备有私人休闲空间，不得不说：一个房间便是一个世界
 22. 镜子是空间必不可少的用品，也是不可多得的装饰
 23. 暗色玻璃的运用既分隔了空间，又为空间增添了几分神秘与情趣
 24. 斜面的浴缸是空间的特别之处，黑釉的外表在白色床品的映衬下显得更有质感

23

24

